

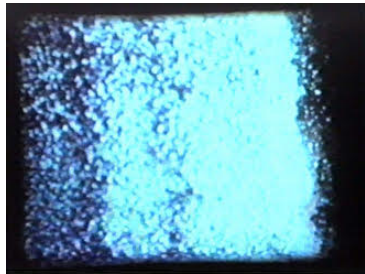
SNO 127

JOHN GILLIES

15 October – 13 November 2016

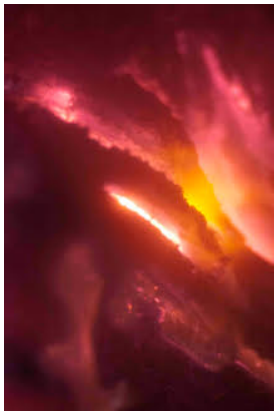
Foyer

Snow Storm 1982
video loop mono sound
(provenance: installed Art/Empire/Industry, Sydney 1982)



Gallery 1 (Lit)

Duchess of the Fields 2016 + *Golden Horde* 2016
Archival print
Framed: 1600 (height) x 1100 (width) on split battens
(provenance: new work)



Duchess of the Fields 2016



Golden Horde 2016

Gallery 2

Homage to Gerald Lewers and Margel Hinder 2015

Large video projection with stereo sound

(provenance: commissioned by Newcastle Art Gallery 2015
as part of Sydney Six)



Projection Space

Scalpel/Wood/Table 1982-2004

video, stereo sound

(provenance: Performance Space 2004 and others)



Gallery 3

Constellation 2016

CRT TVs

New Work